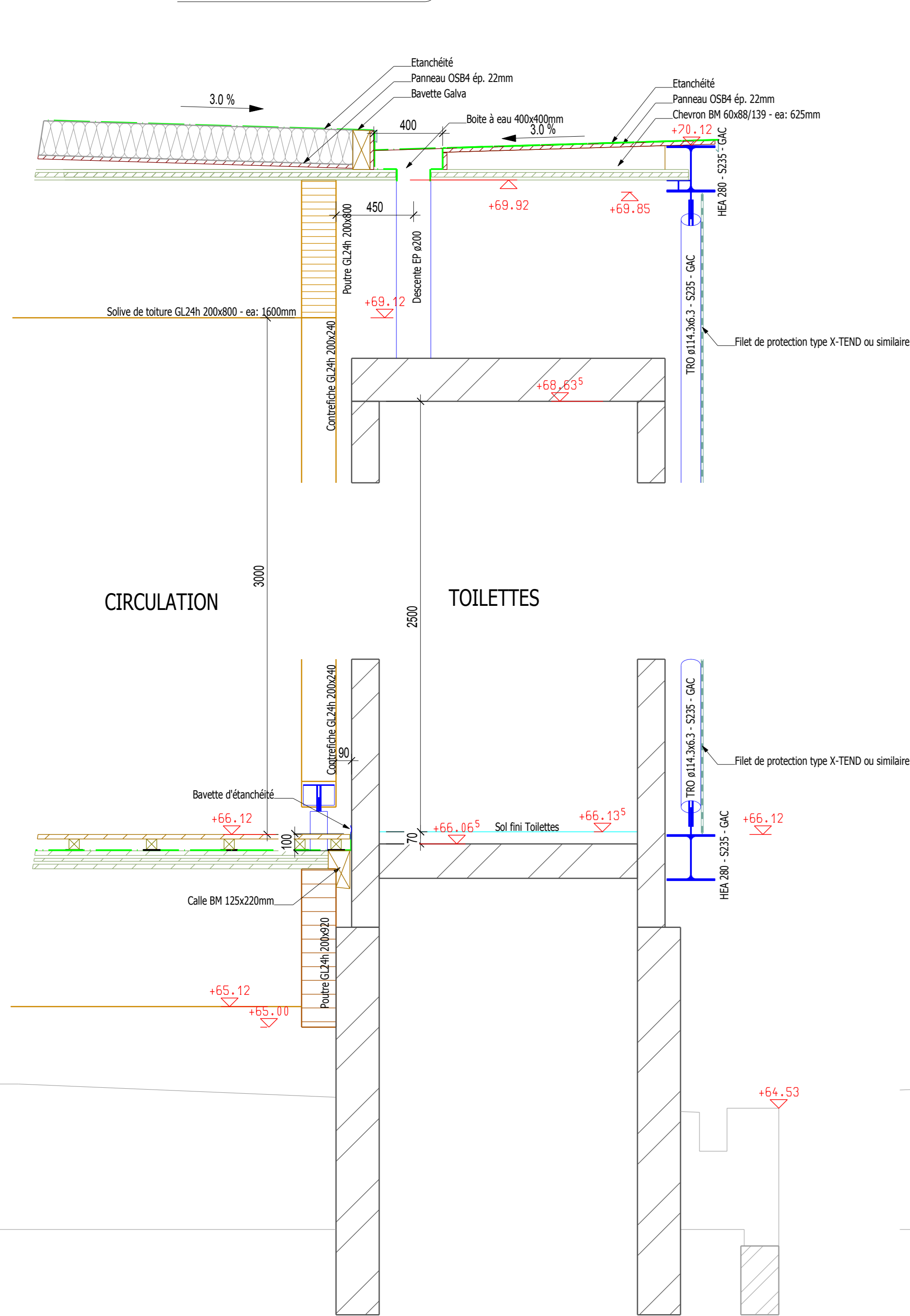
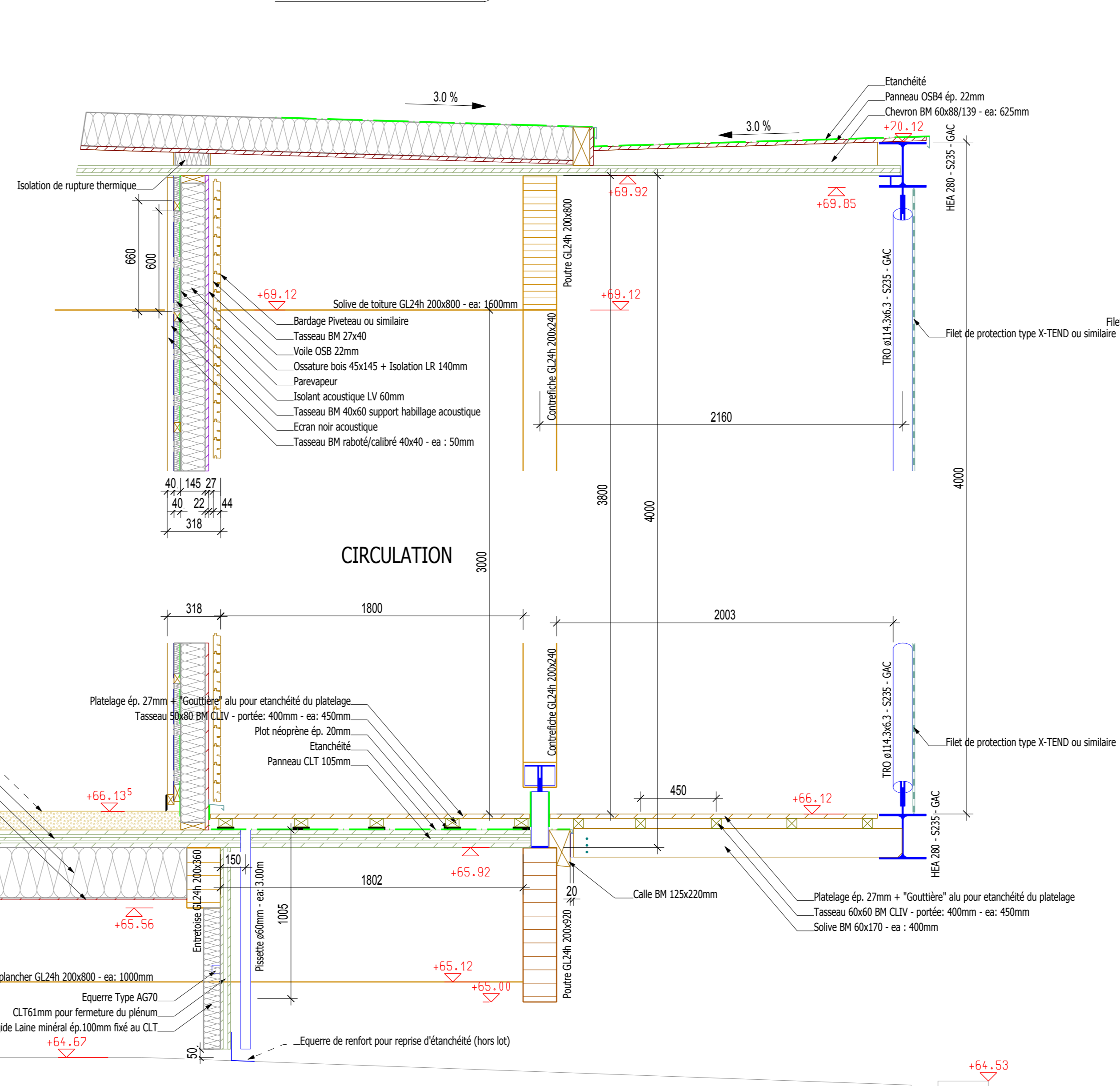


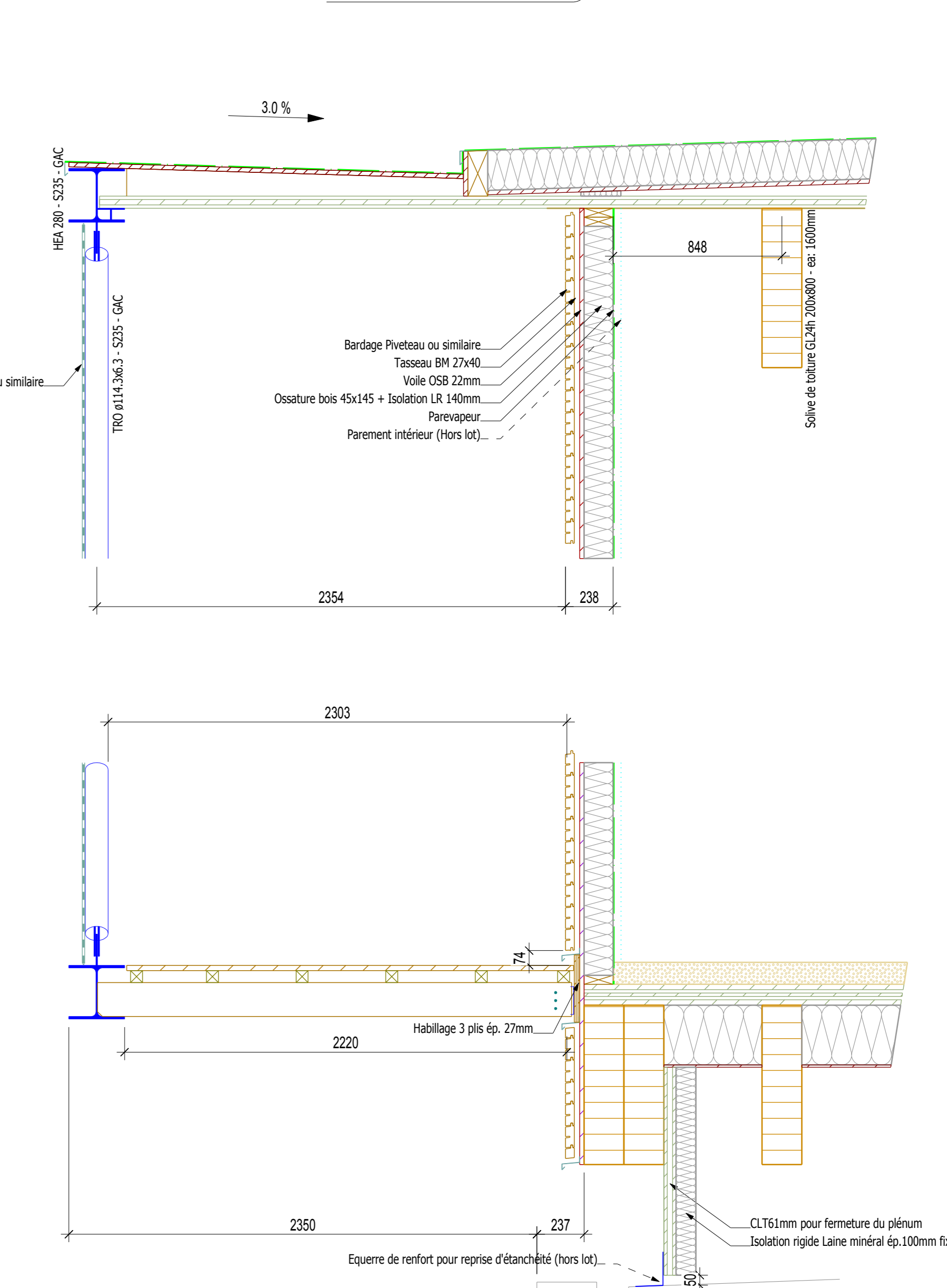
Détail sur module toilettes



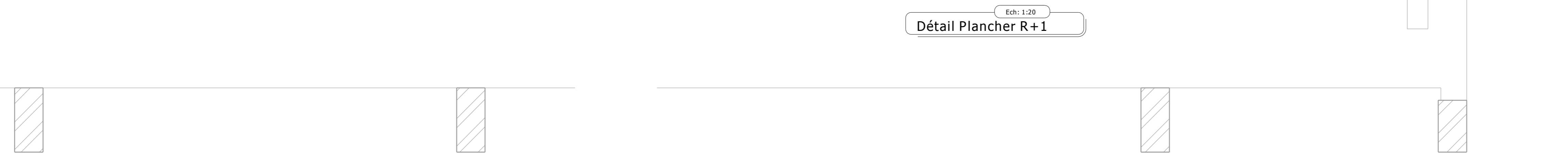
Détail bas de pente toit



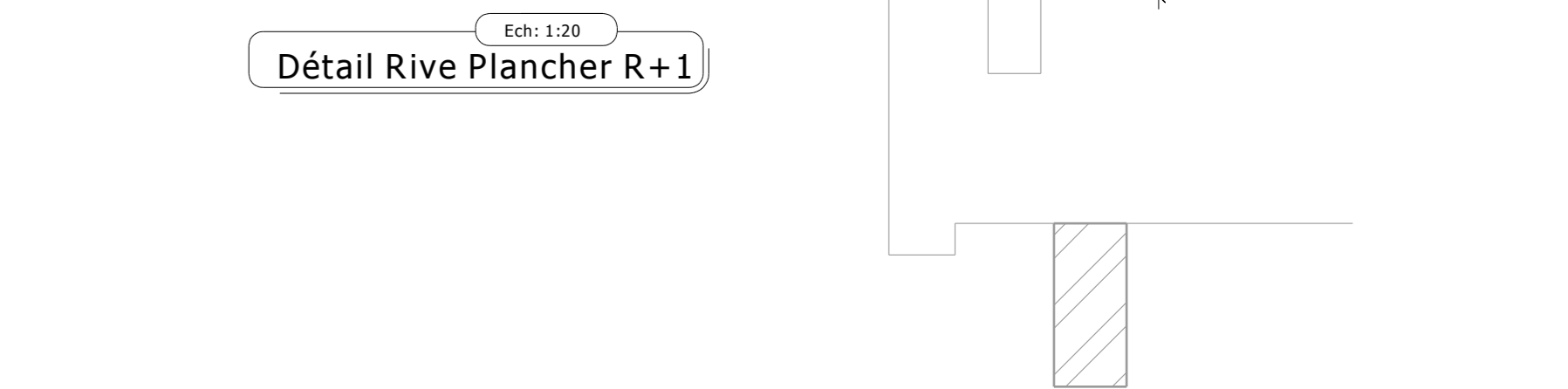
Détail rive toit



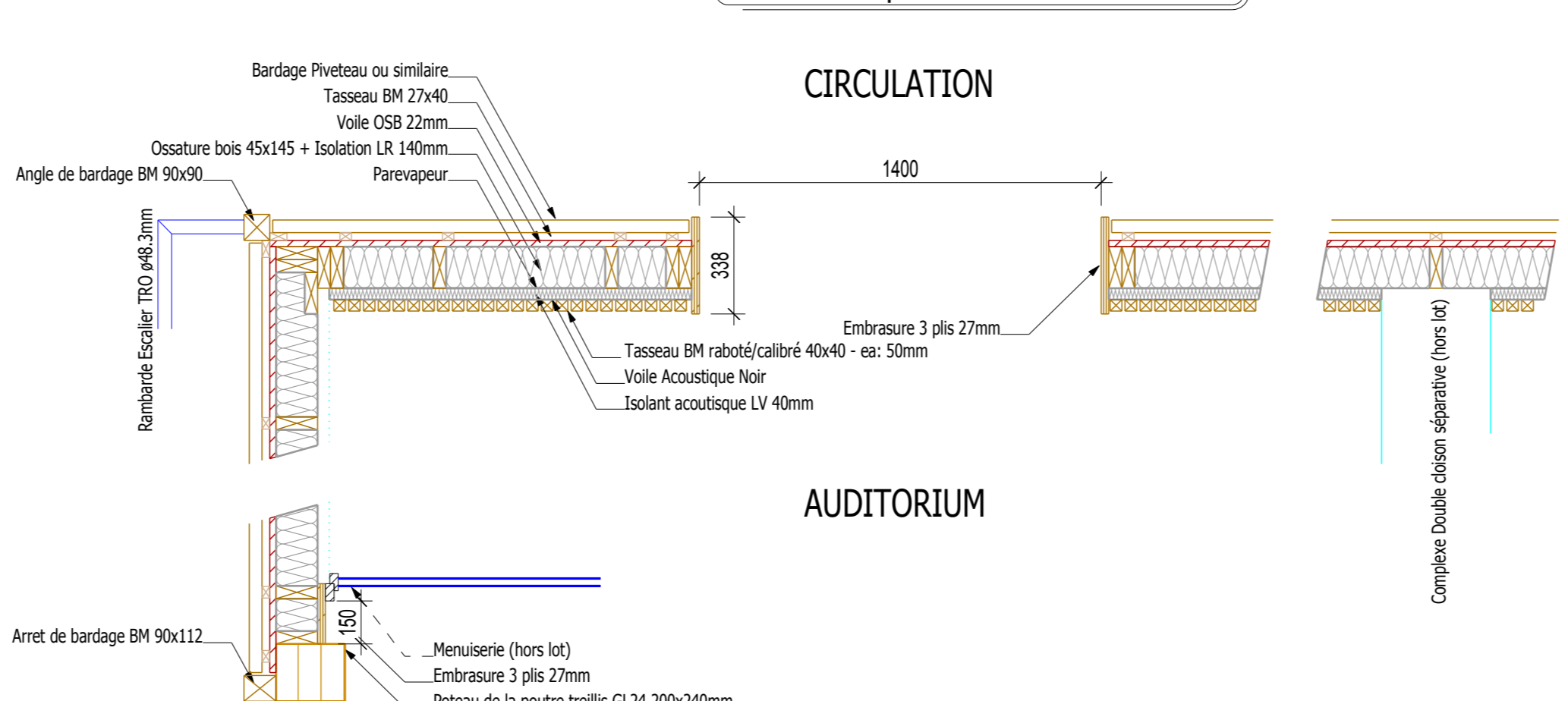
Détail Plancher R+1



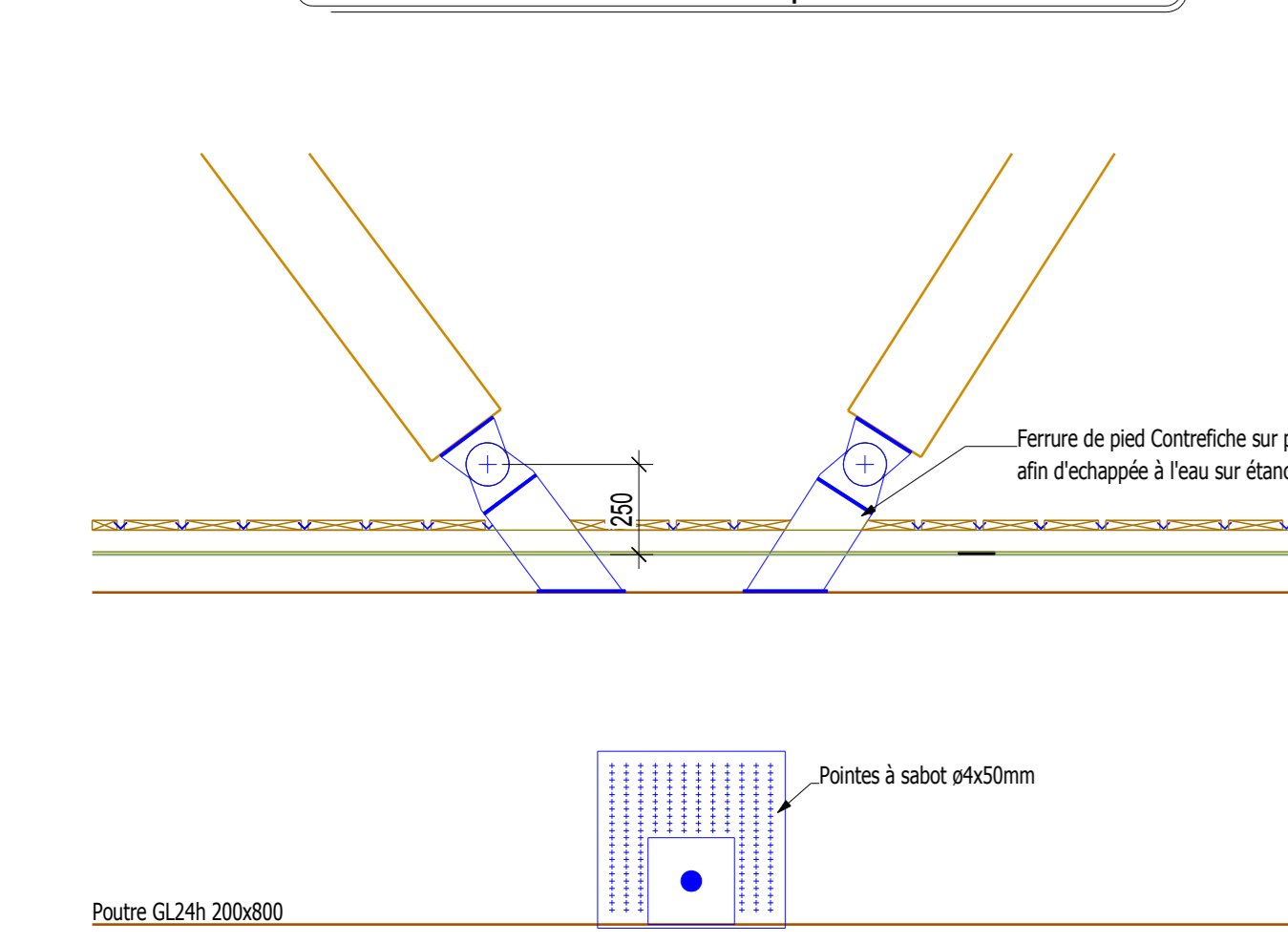
Détail Rive Plancher R+1



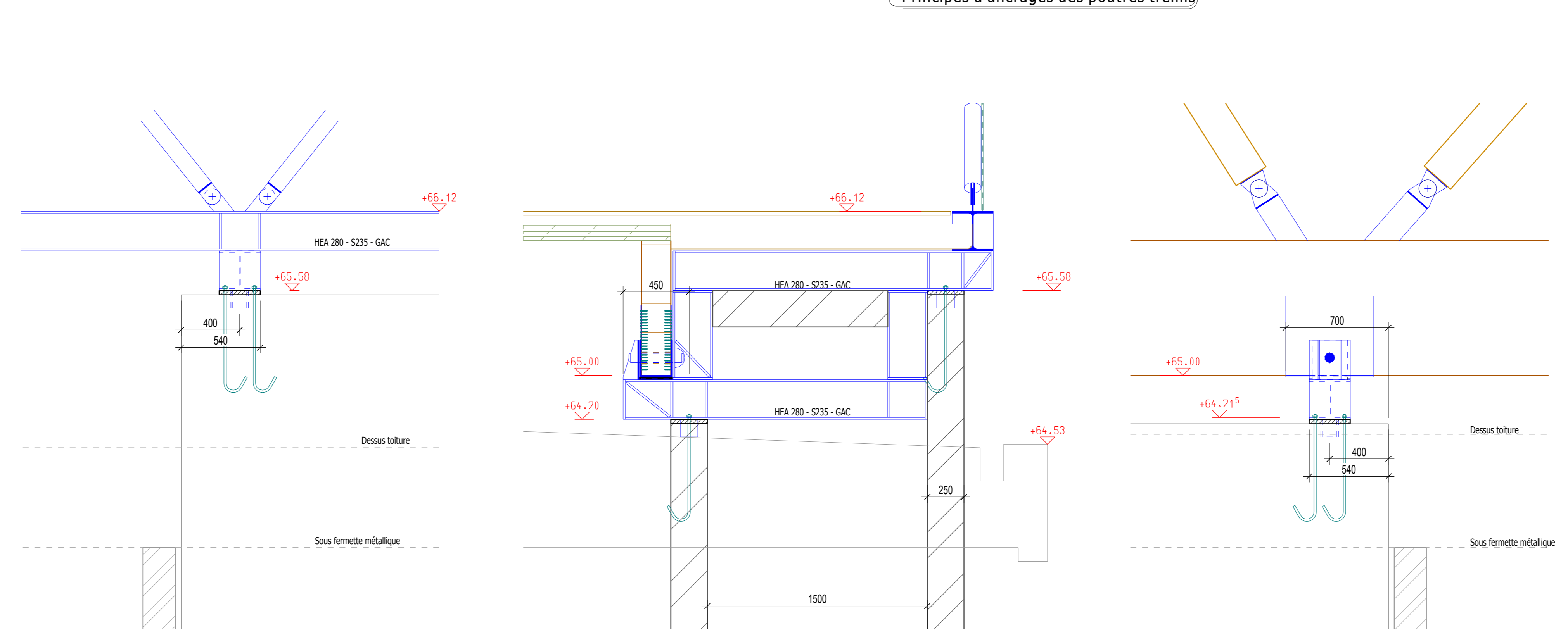
Détail coupe horizontale sur MOB



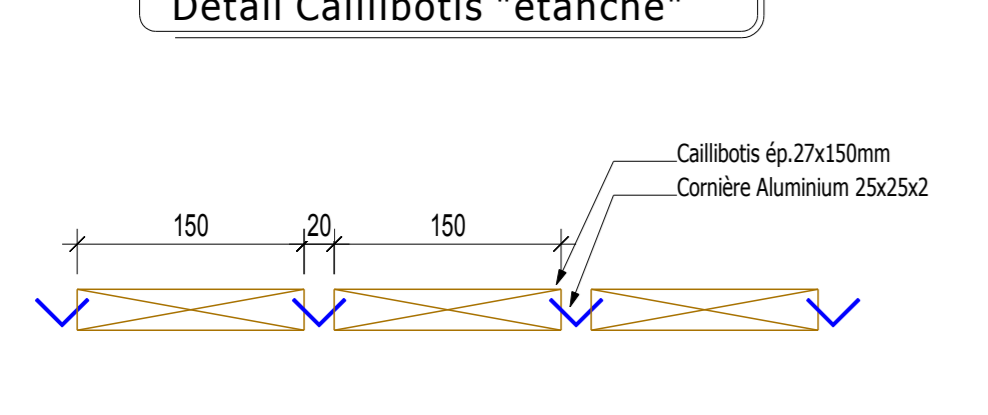
Détail Pieds contrefiches poutre treillis Nord



Principes d'ancrages des poutres treillis



Détail Caillibotis "étanche"



Plan
PLAN MARCHE

STB 03
C
1/20
14-05-2014
A BLONCHAUX

Auditoriums université P. VALERY

Détails

Modifications	Date

Gaujardtechnologie scop
Bureau d'études structure bois et enveloppe en matériaux biosourcés
10000 Angoulême
14 rue Pierre Bagnier
M 04 80 86 10 46 - Fax 04 80 86 66 00
contact@te-g.com

