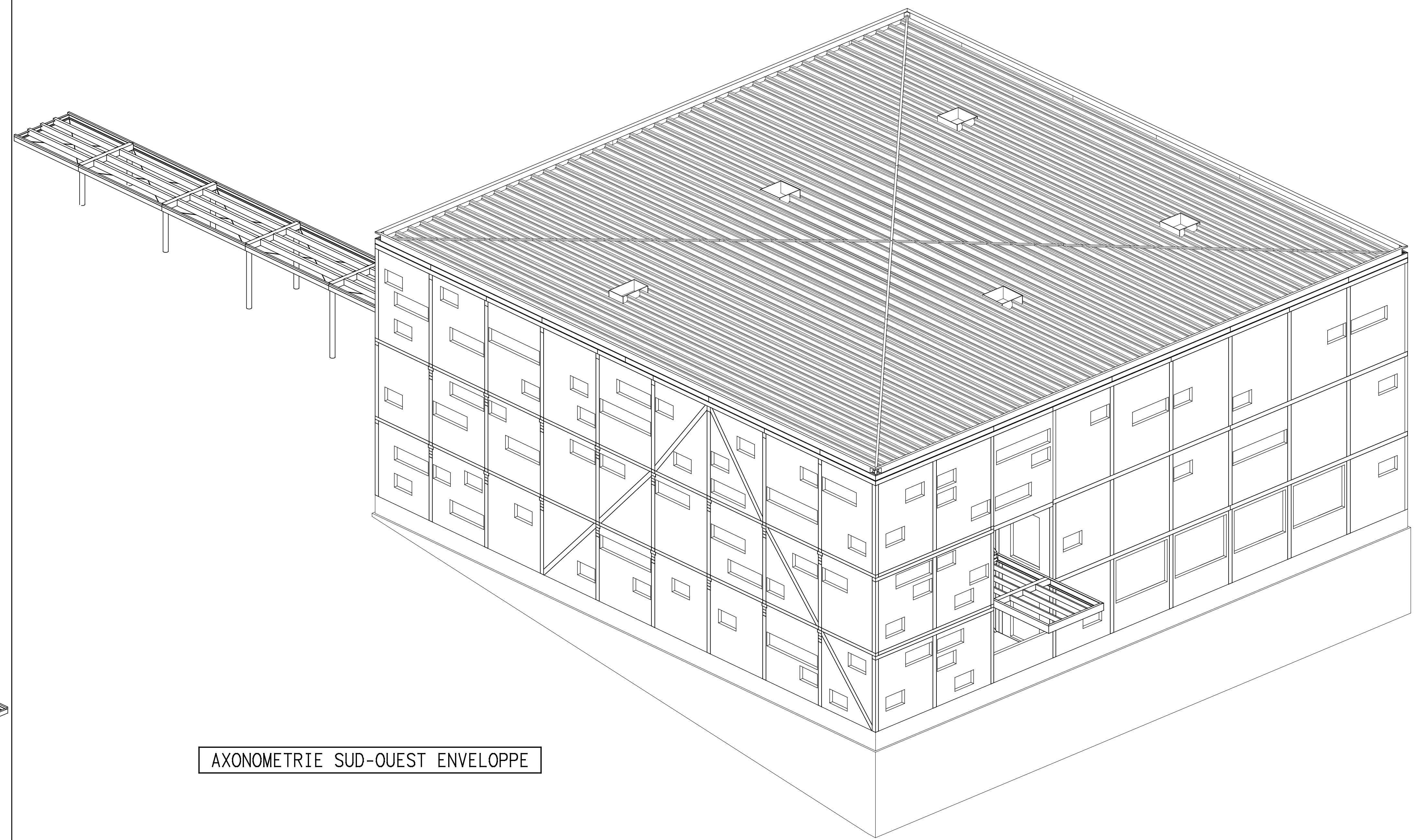
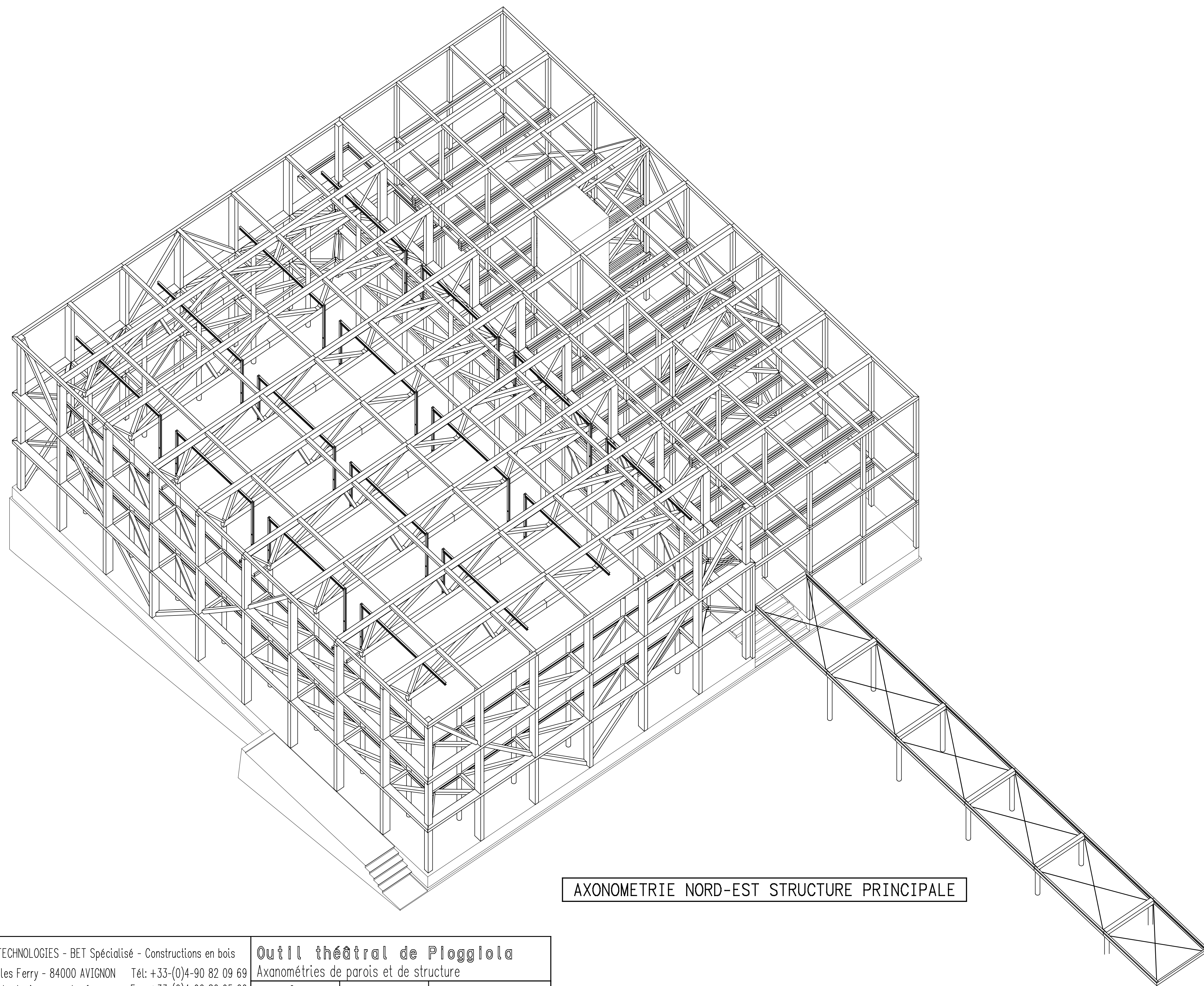


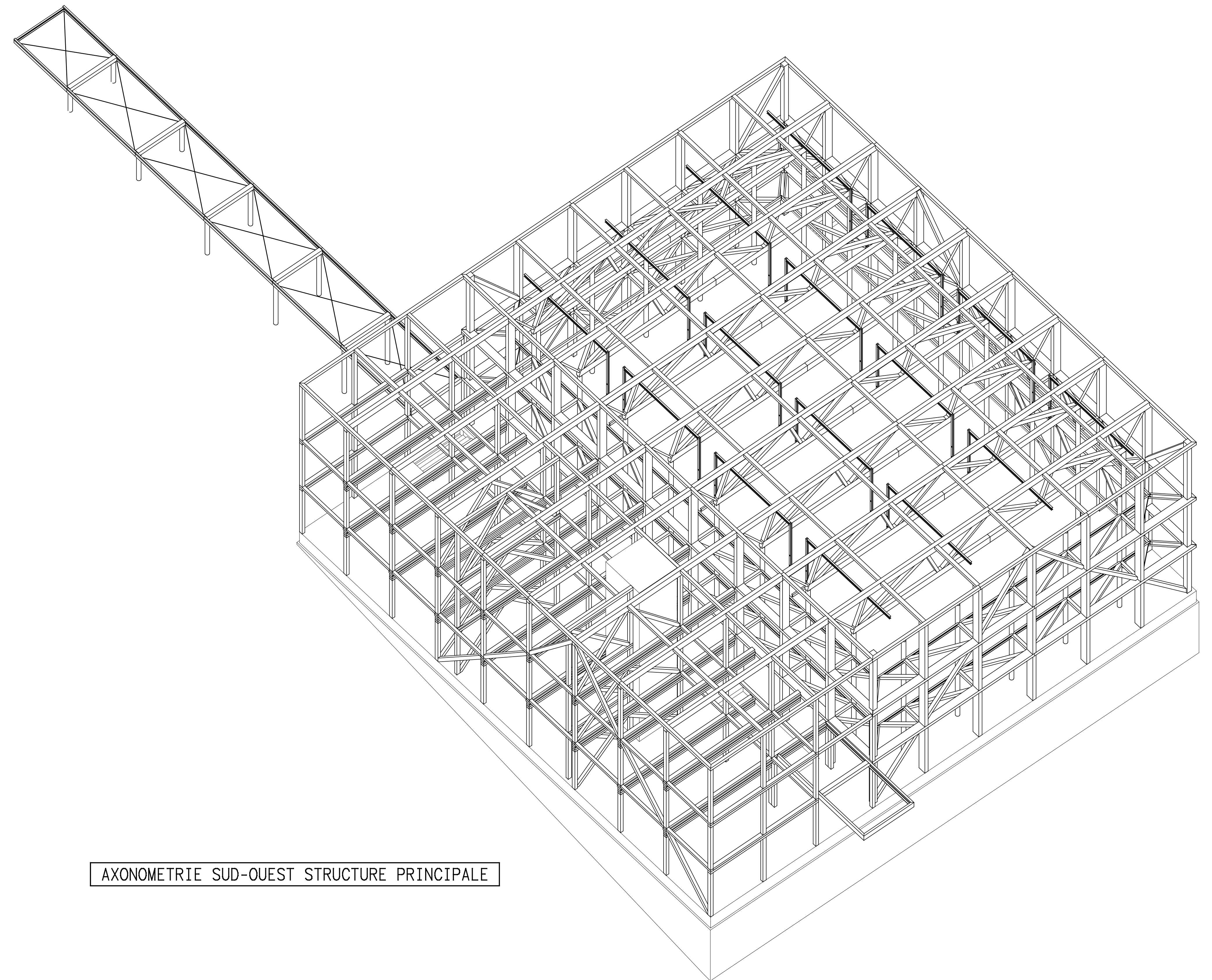
AXONOMETRIE NORD-EST ENVELOPPE



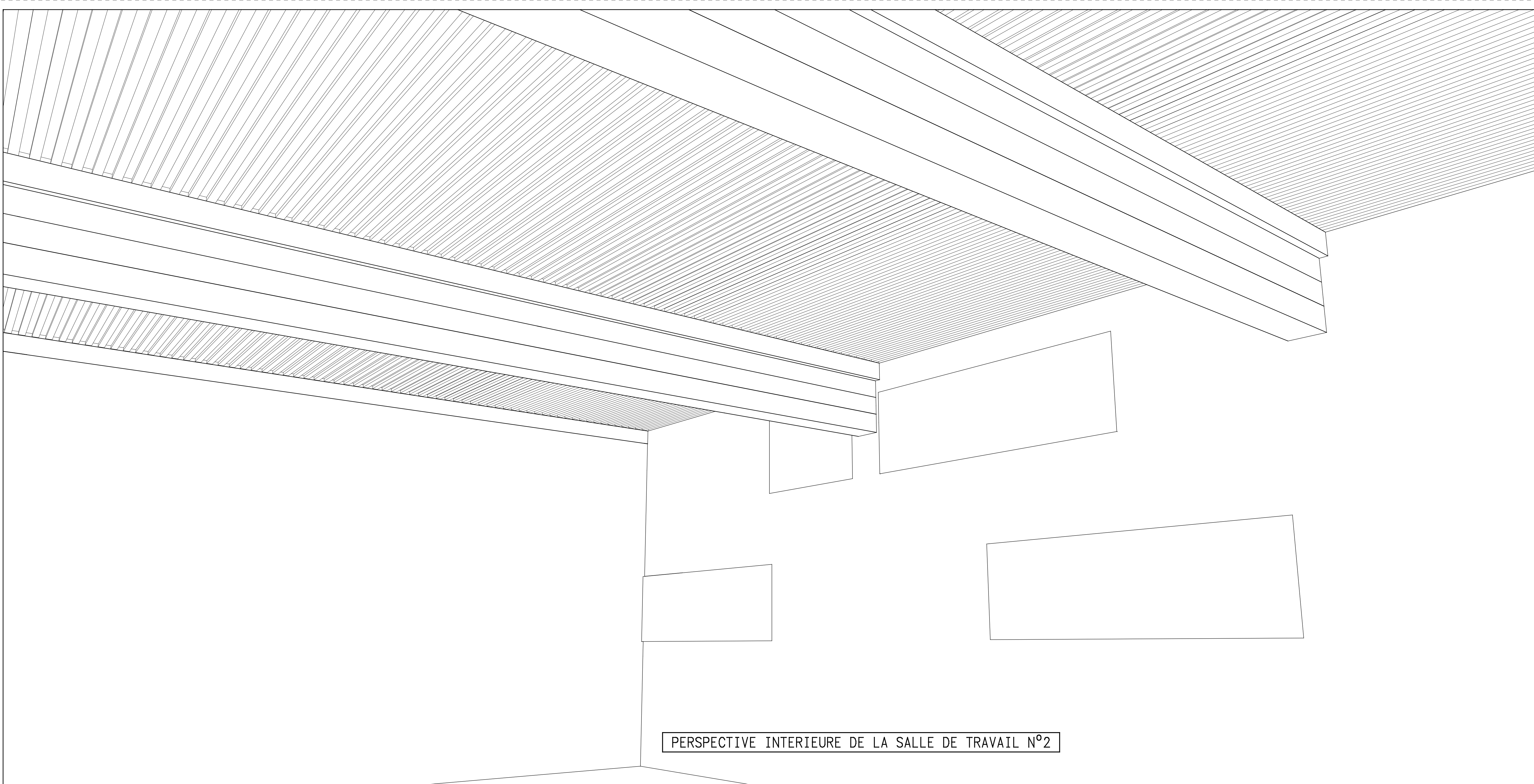
AXONOMETRIE SUD-OUEST ENVELOPPE



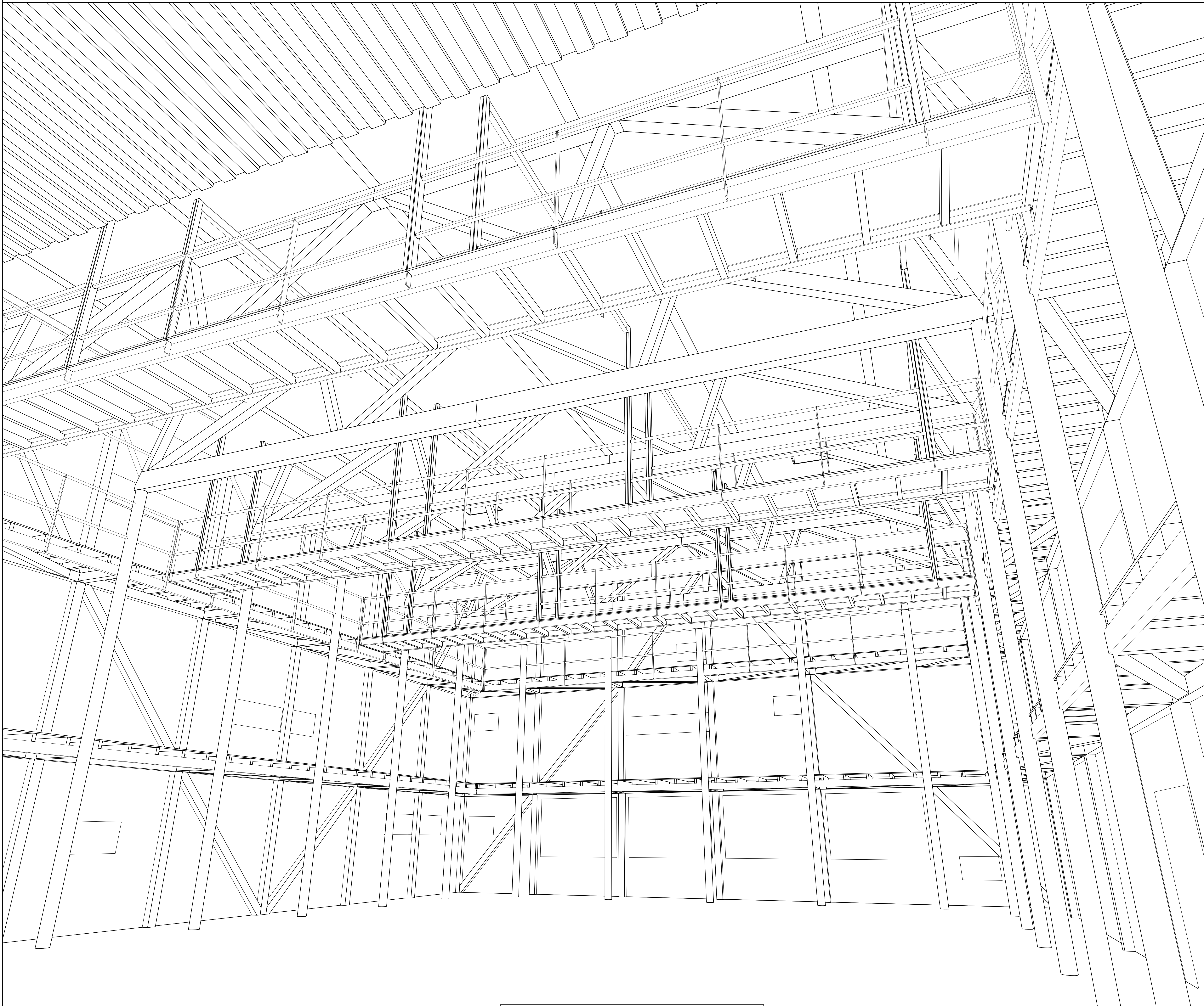
AXONOMETRIE NORD-EST STRUCTURE PRINCIPALE



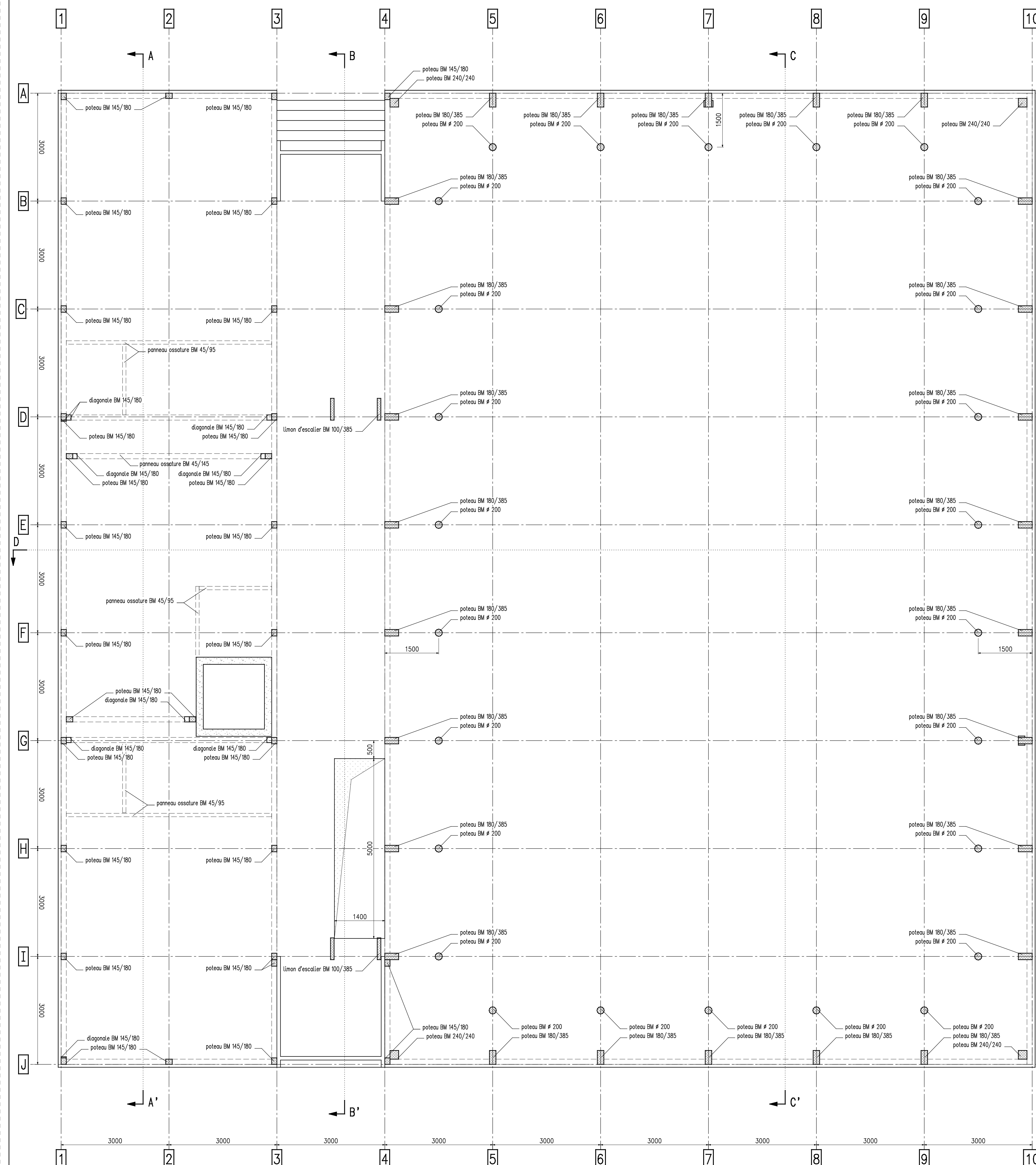
AXONOMETRIE SUD-OUEST STRUCTURE PRINCIPALE



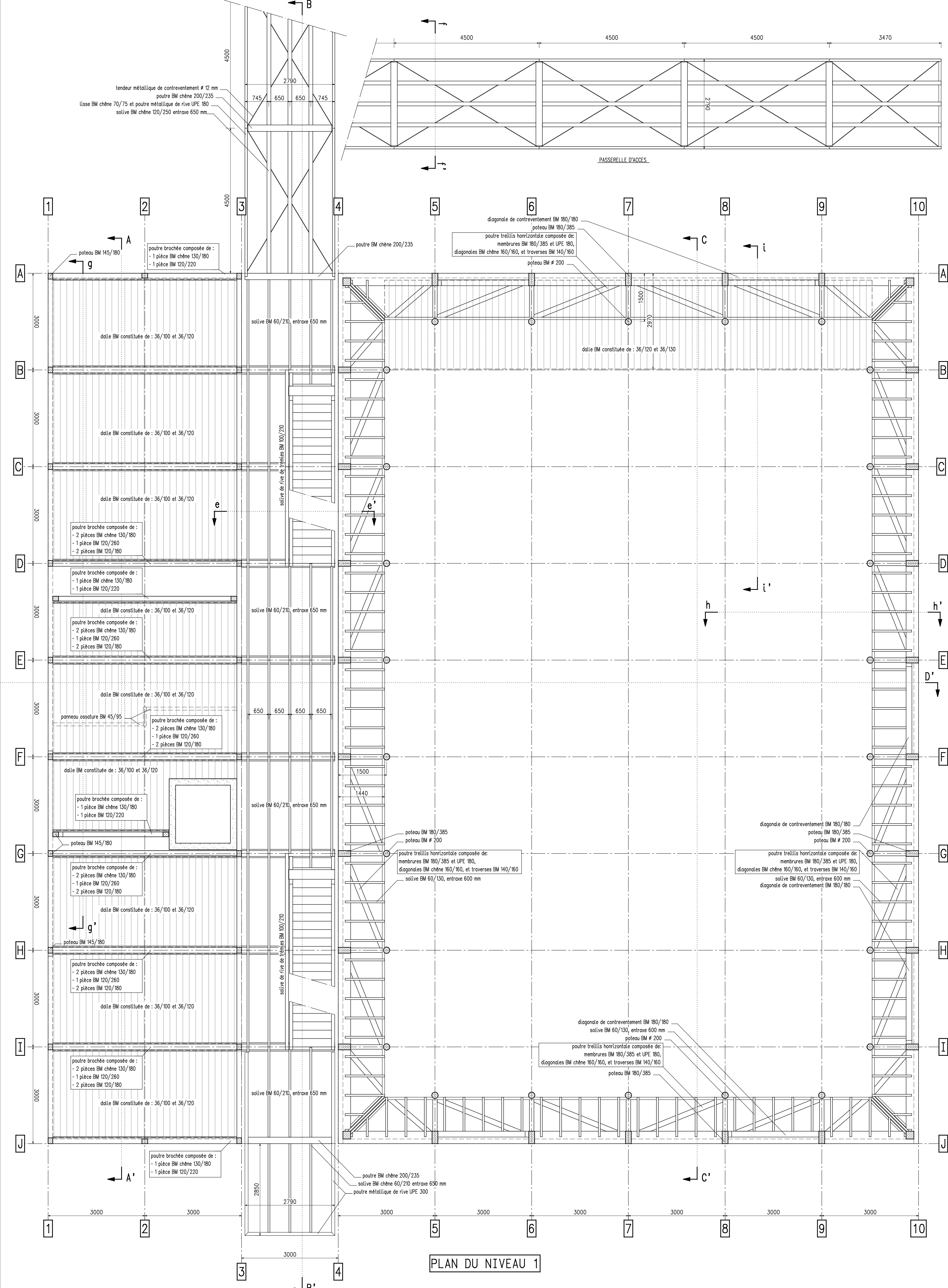
PERSPECTIVE INTERIEURE DE LA SALLE DE TRAVAIL N°2



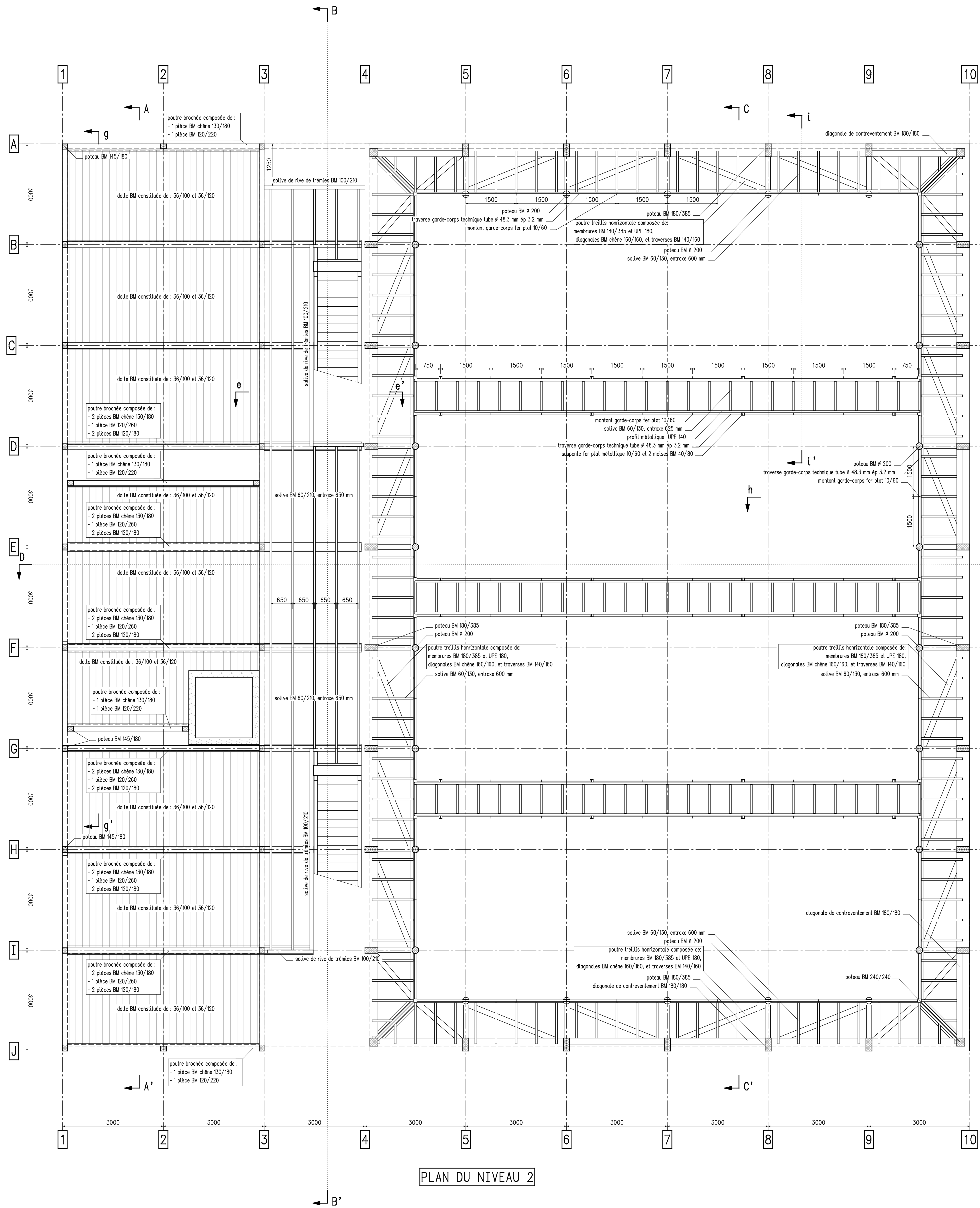
PERSPECTIVE INTERIEURE DE LA GRANDE SALLE



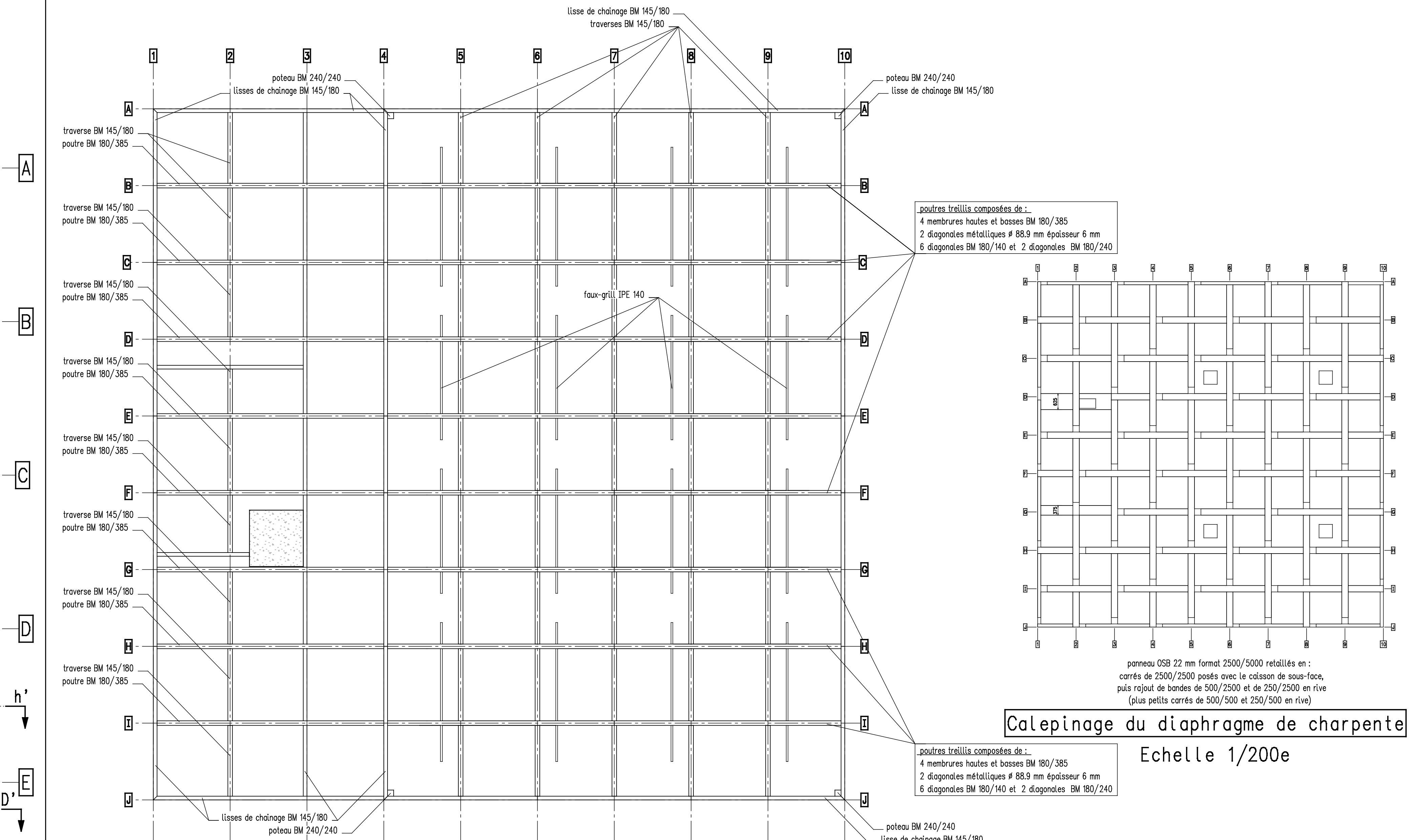
PLAN D'IMPLANTATION DES POTEAUX



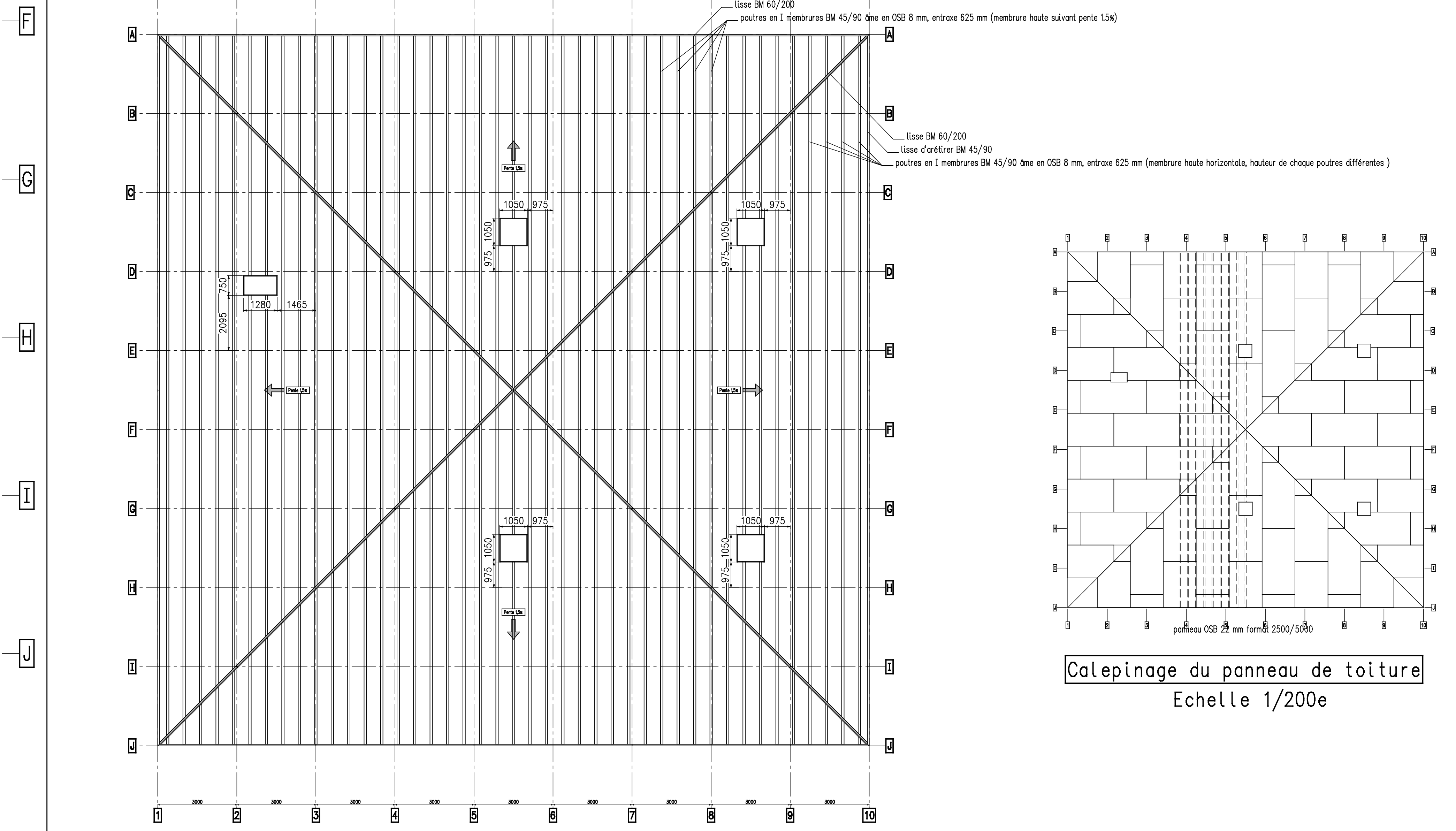
PLAN DU NIVEAU 1



PLAN DU NIVEAU 2



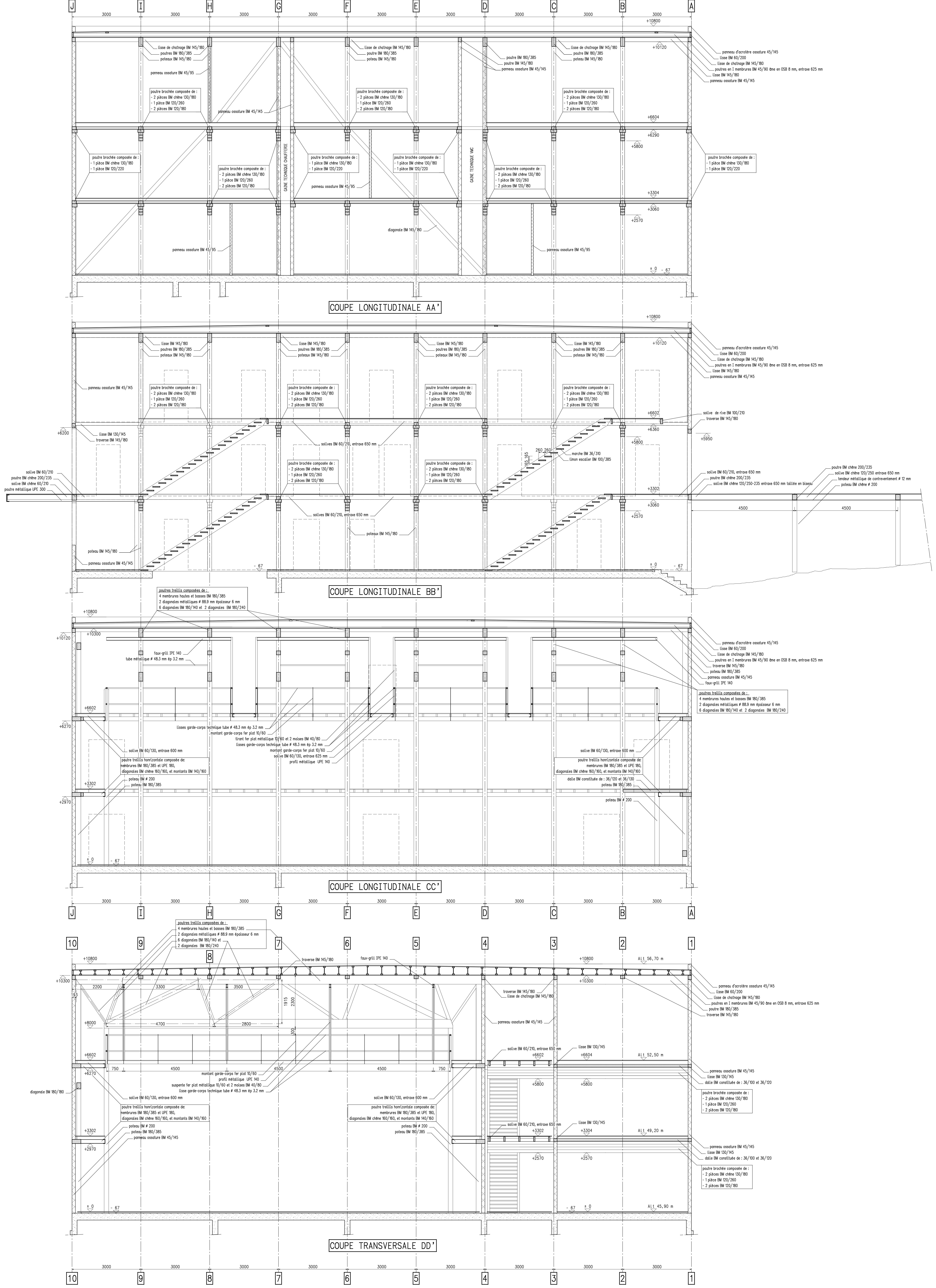
PLAN DE CHARPENTE
Echelle 1/100e



PLAN DE CHEVRONNAGE
Echelle 1/100e

Calépinage du diaphragme de charpente
Echelle 1/200e

Calépinage du panneau de toiture
Echelle 1/200e

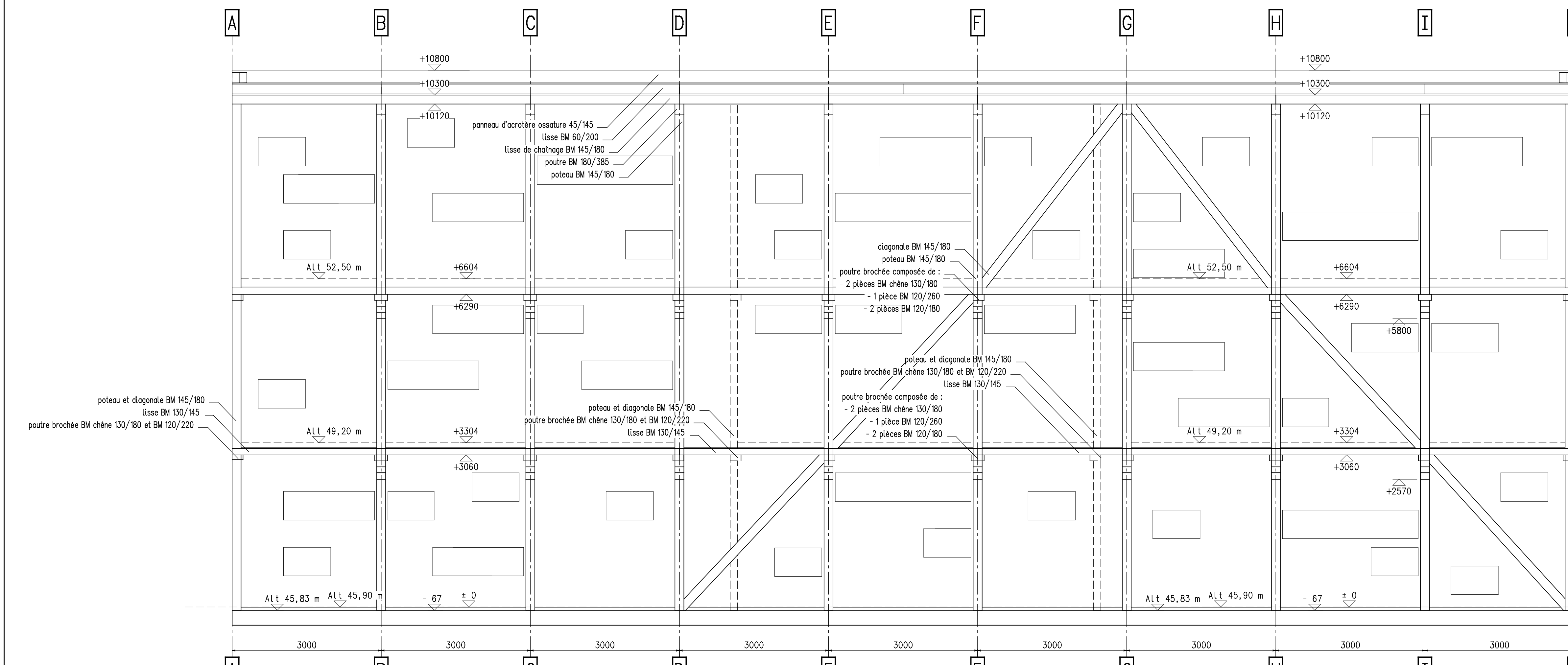


COUPE LONGITUDINALE AA'

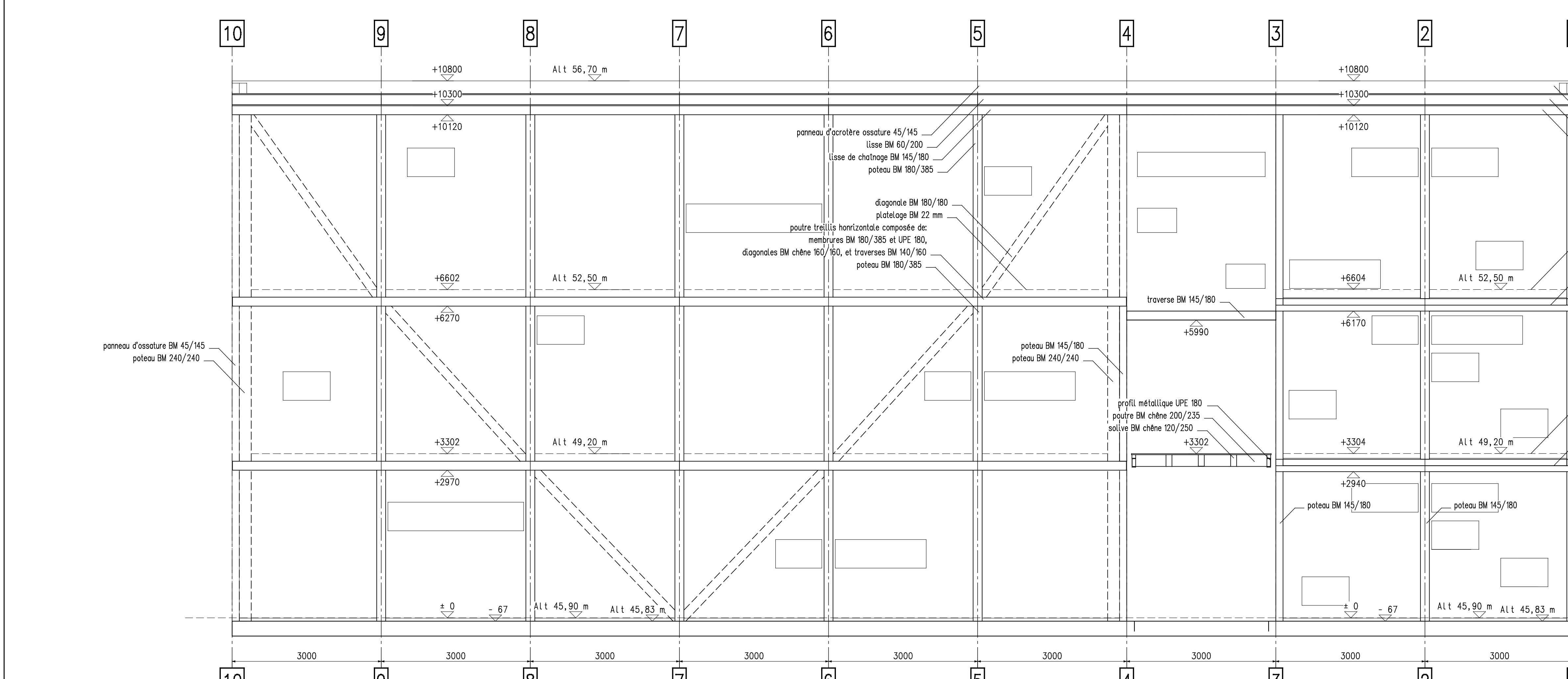
COUPE LONGITUDINALE BB'

COUPE LONGITUDINALE CC'

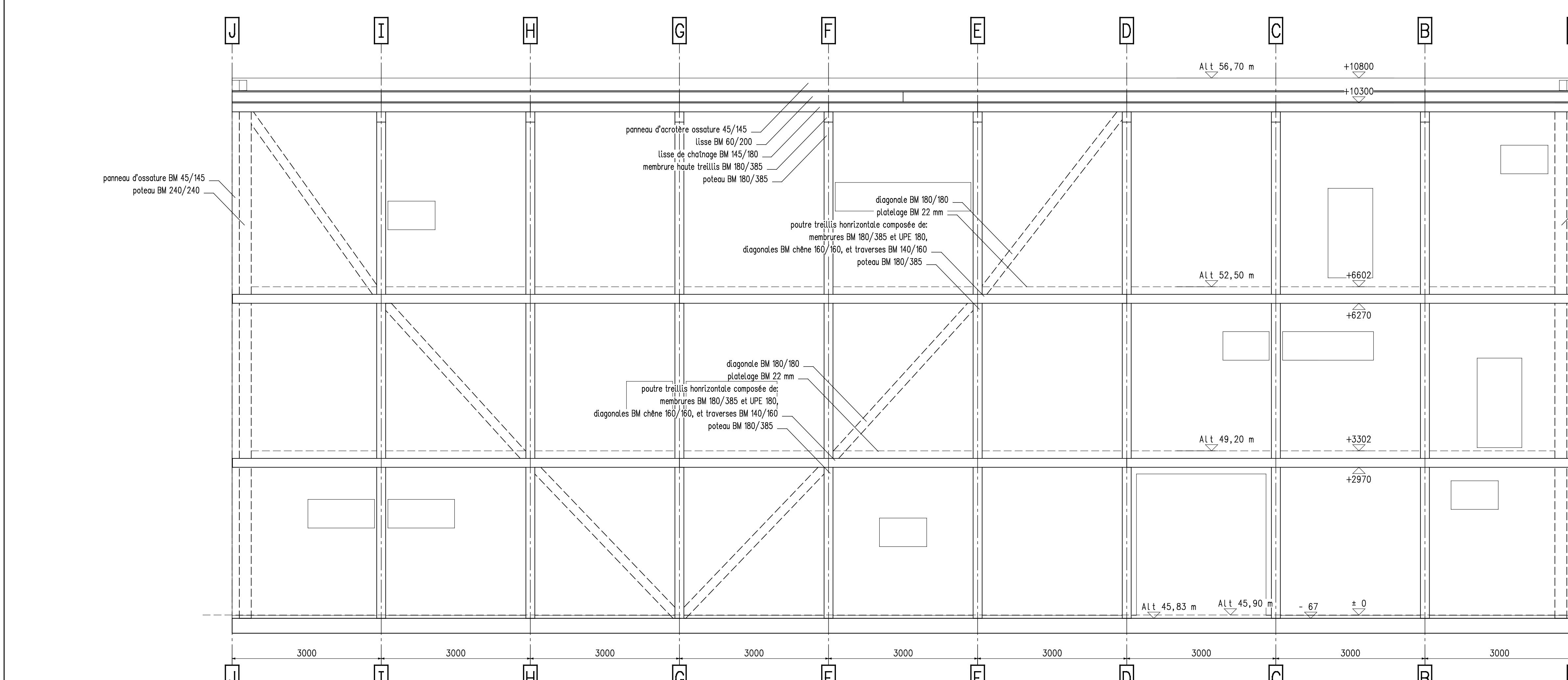
COUPE TRANSVERSALE DD'



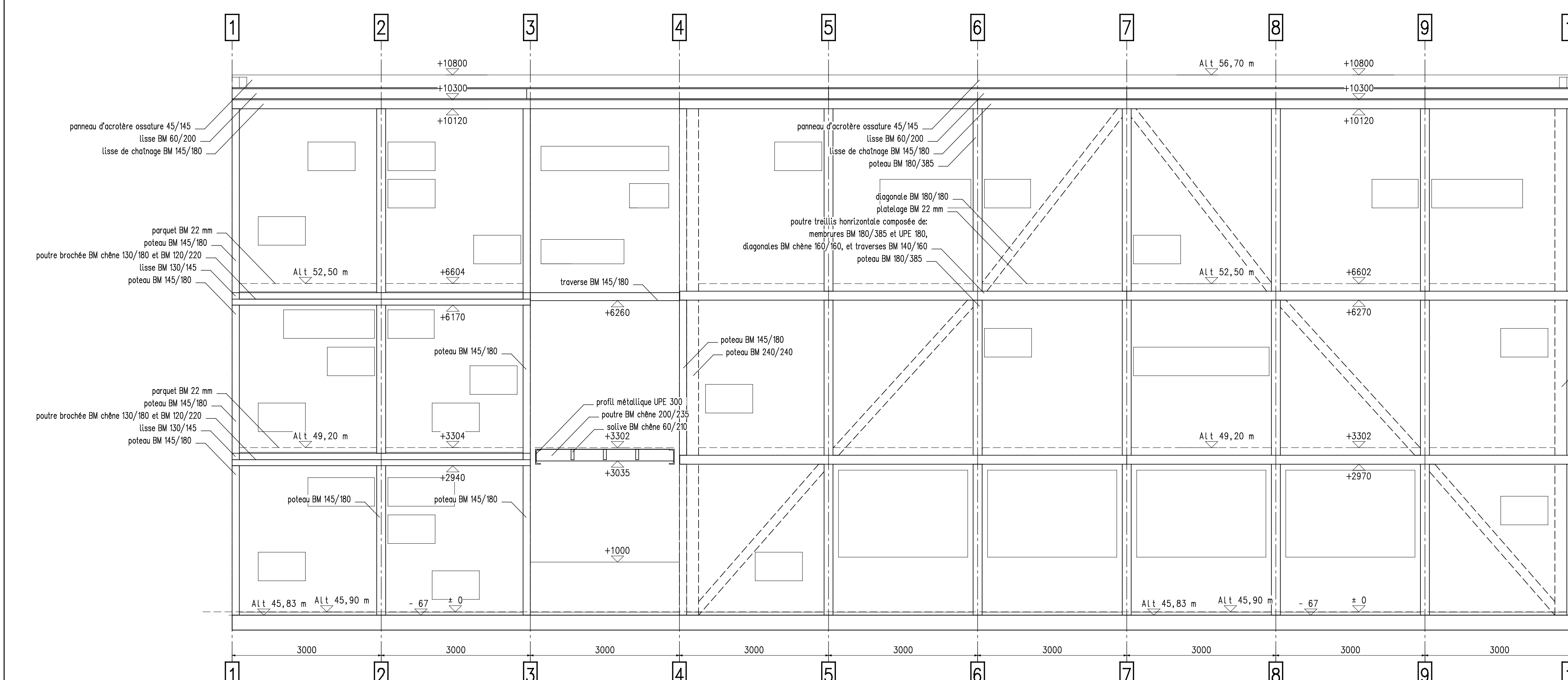
ELEVATION FACADE OUEST



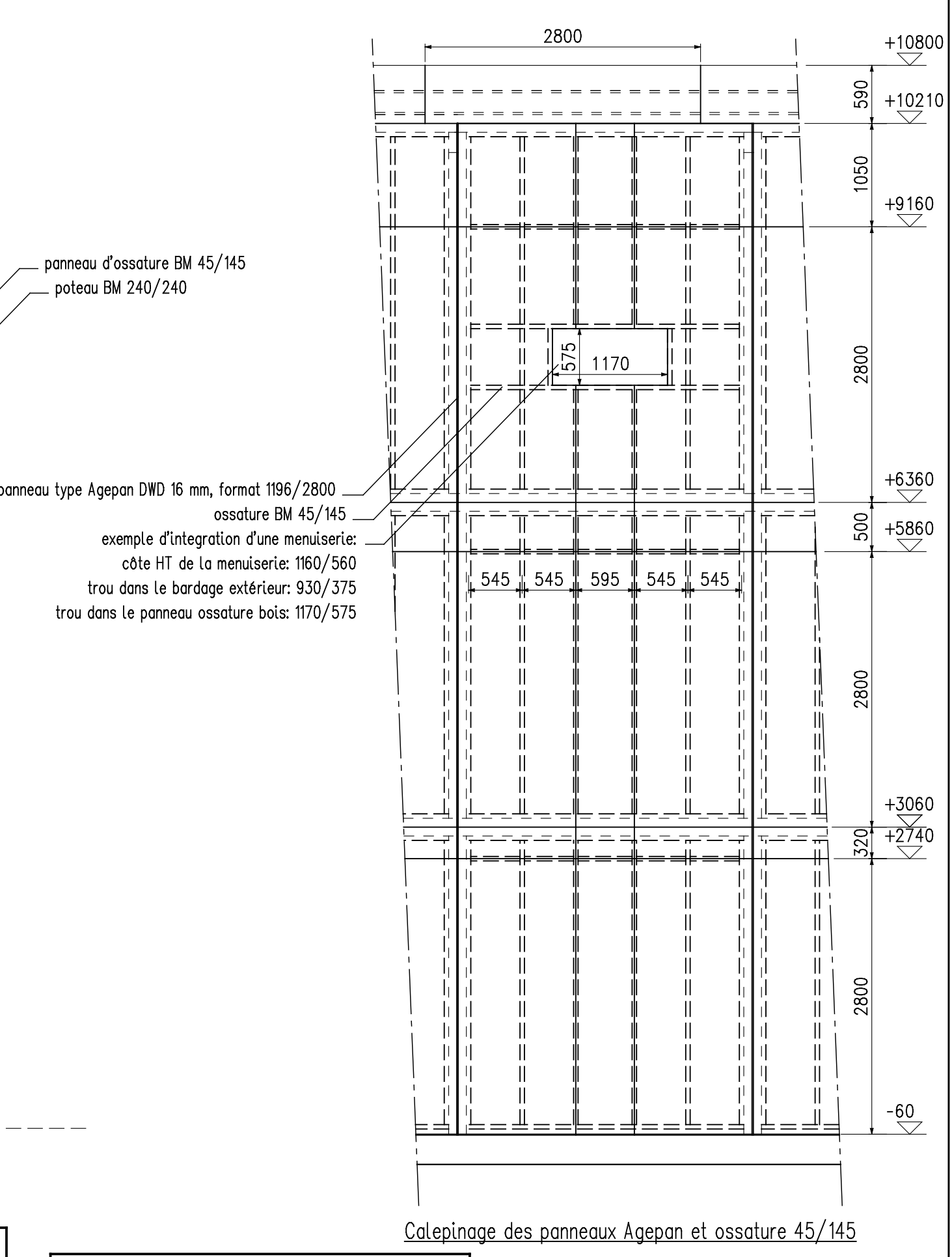
ELEVATION FACADE NORD



ELEVATION FACADE EST

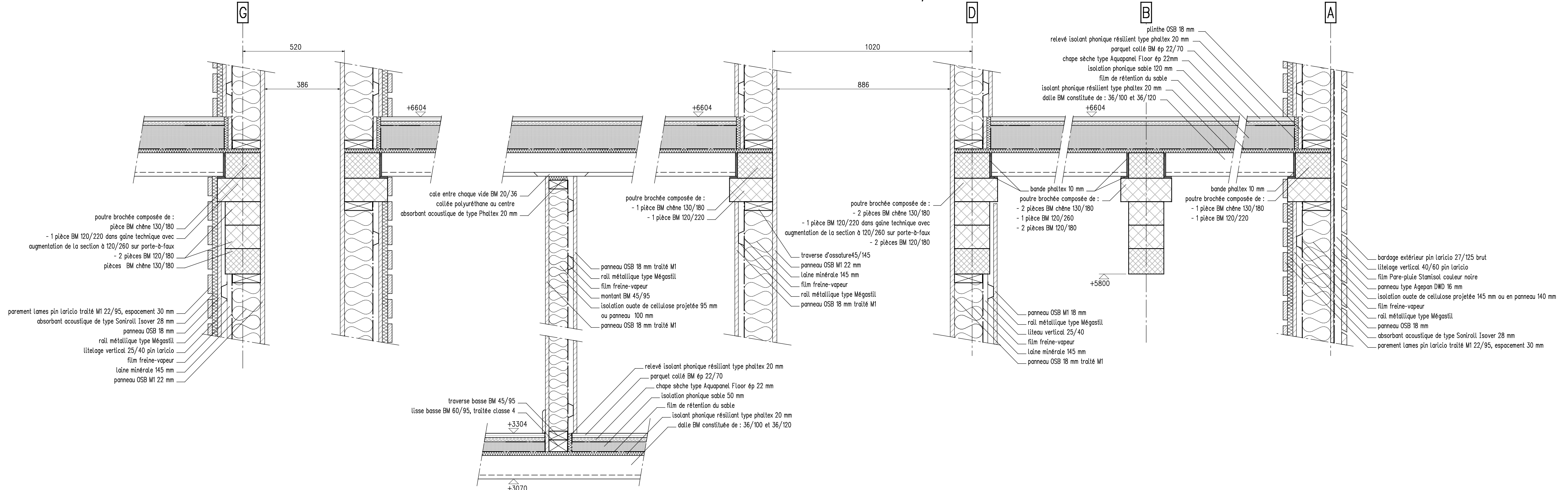


ELEVATION FACADE SUD

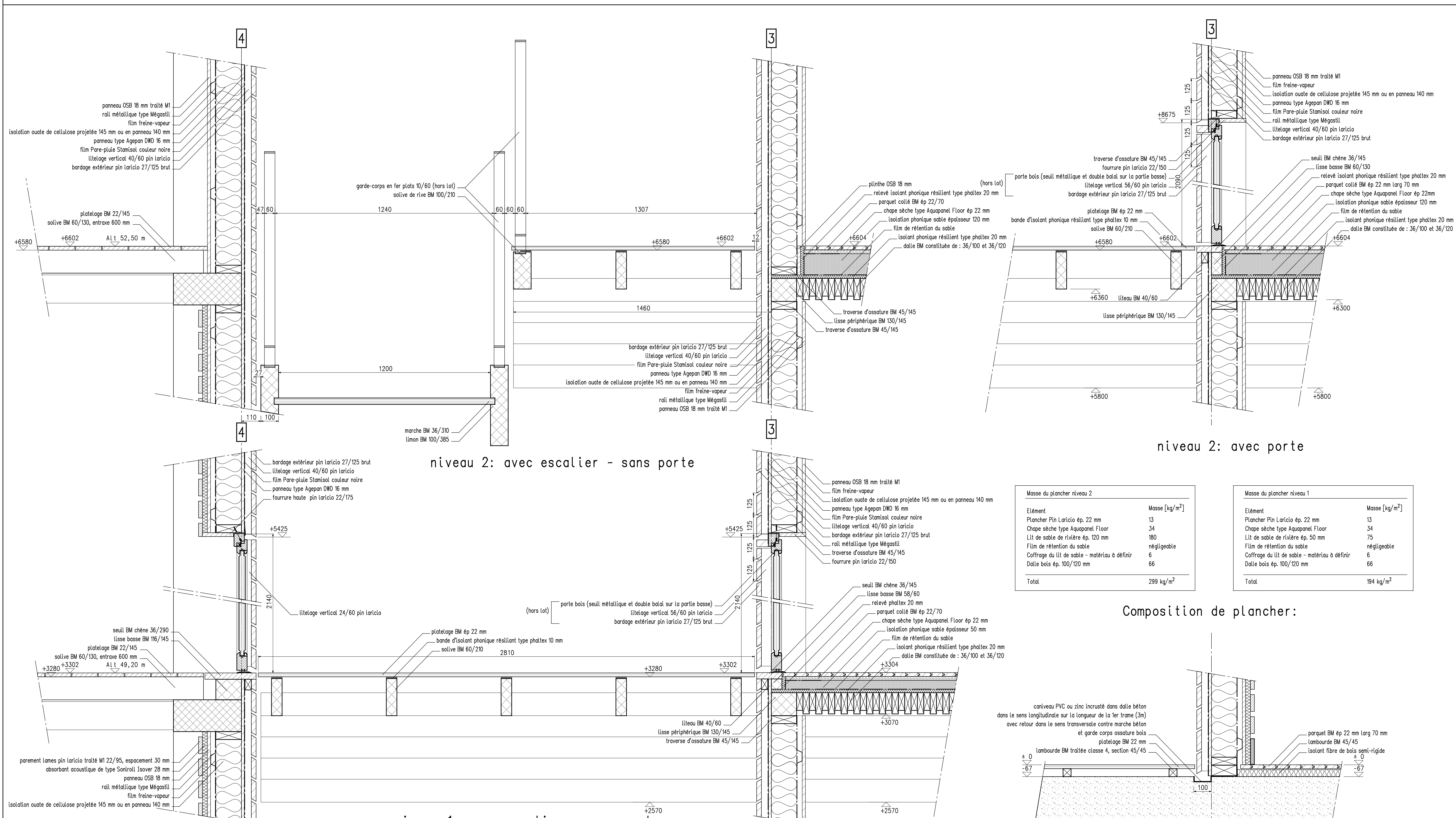


GAINÉ TECHNIQUE CHAUFFERIE CF 1/2 heure

GAINÉ TECHNIQUE VMC CF 1/2 heure



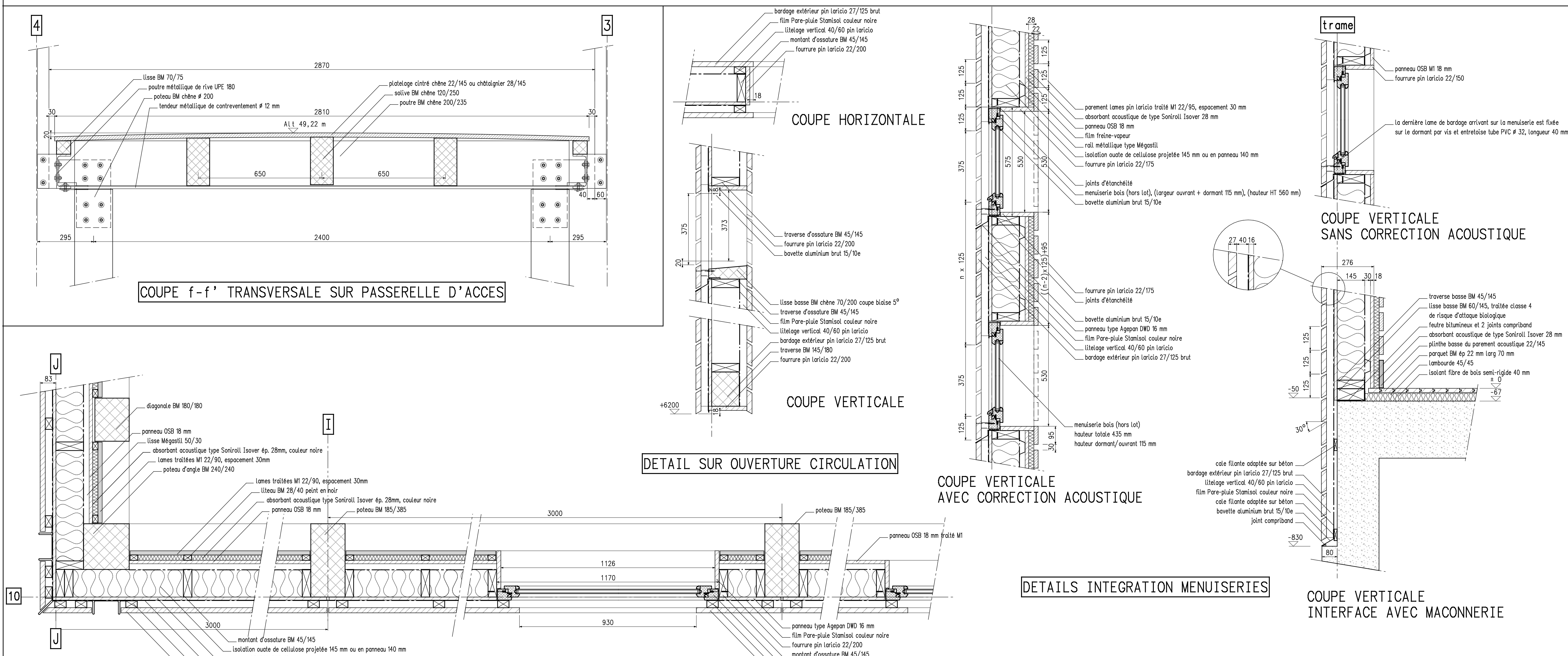
COUPE LONGITUDINALE gg' SUR SALLES NIVEAU 1 ET NIVEAU 2

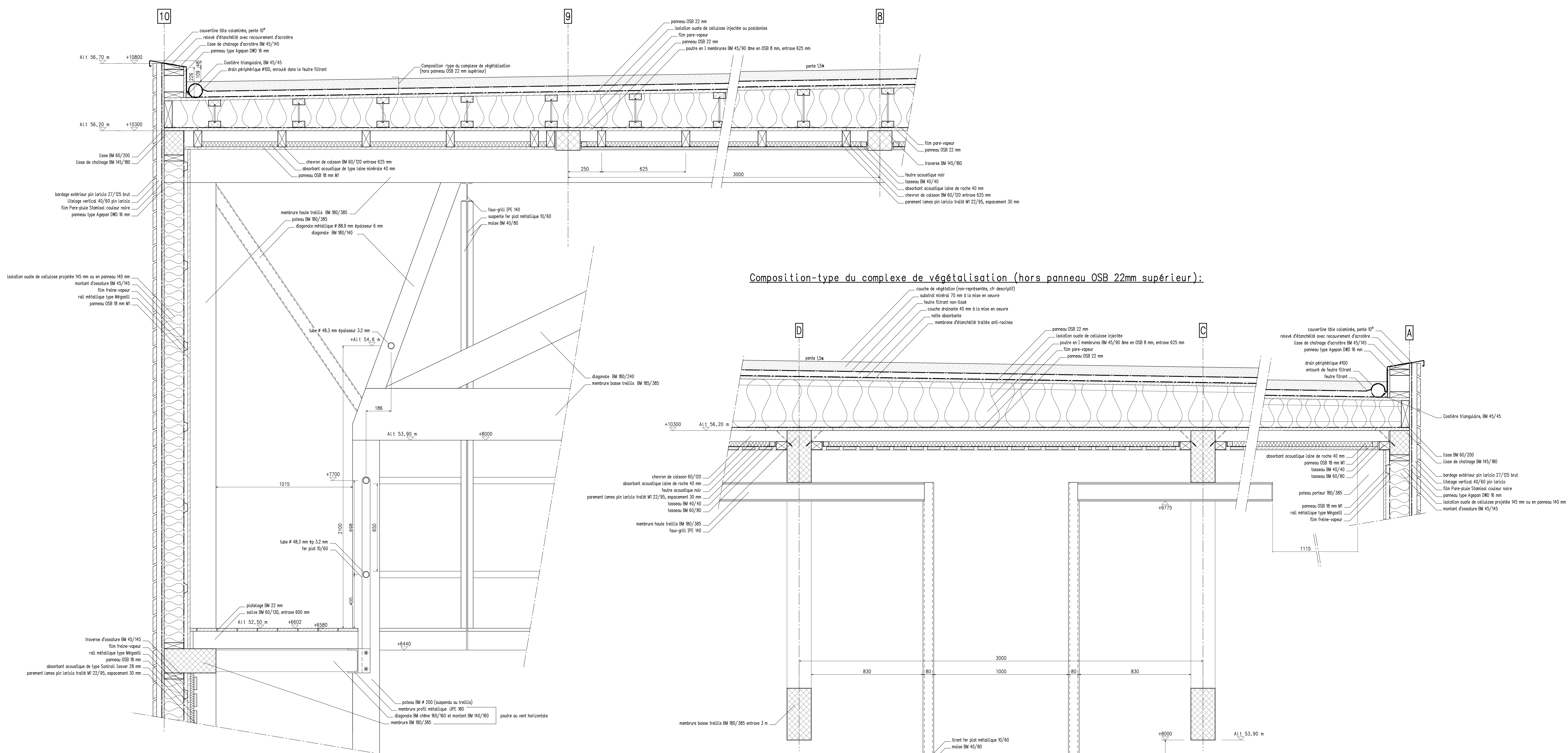


Composition de plancher:

Masse du plancher niveau 2		Masse du plancher niveau 1	
Élément	Masse (kg/m²)	Élément	Masse (kg/m²)
Plancher Pin Laricio ép. 22 mm	13	Plancher Pin Laricio ép. 22 mm	13
Chape sèche type Aquapanel Floor	34	Chape sèche type Aquapanel Floor	34
Lit de sable de rivière ép. 50 mm	80	Lit de sable de rivière ép. 50 mm	75
Film de rétention du sable	négligeable	Film de rétention du sable	négligeable
Colfofrage du lit de sable - matériau à définir	6	Colfofrage du lit de sable - matériau à définir	6
Dalle bois ép. 100/120 mm	66	Dalle bois ép. 100/120 mm	66
Total	299 kg/m²	Total	194 kg/m²

COUPE ee' TRANSVERSALE SUR CIRCULATION NIVEAU 0,1 ET 2





COUPE TRANSVERSALE hh' SUR TOITURE ET PAROI

COUPE LONGITUDINALE ii' SUR PASSERELLE FAUX-GRILL

COUPE HORIZONTALE SUR DESCENTE EP ET DRAIN PERIPHERIQUE

COUPE VERTICALE JJ' SUR DESCENTE EP ET DRAIN PERIPHERIQUE